



Retailer Runway

K9 Resorts





Retailer Runway

Luxury Pet Hotel Investments, LLC
DBA K9 Resorts Luxury Pet Hotels

Zack Nisbet
Co-Founder, Operations Lead, EVP Chicago Region





What is K9 Resorts?



K9 Resorts Overview



- Luxury dog boarding and daycare hotels
- Founded in 2005
- National franchise with 34 locations open and over 150 in development
- Air purification systems
- Segmented HVAC systems
- Sound dampening materials



Lobby



Luxury Suites



- 8' x 8' cage-free space
- Ideal for families with multiple pets
- Kuranda® luxury dog bedding
- Blue Buffalo top quality meals designed for sensitive stomachs
- Glass privacy doors and sound resistant environment
- In-suite television tuned to Animal Planet or Dog TV
- Choice of all-day group play or individual playtime with staff



Executive Rooms and Compartments



- 5' x 7' cage-free space
- Most popular accommodation option
- Kuranda® luxury dog bedding
- Ideal for families with one or two dogs



- Standard compartment (top)
recommended for up to 35 lbs
- Double compartment (bottom)
recommended for up to 100 lbs
- Memory foam bedding



Doggie Daycare



- Group play environment
- Designed for dogs that are social for other dogs
- Thorough evaluations conducted for each new dog
- Excellent outlet for energy and socialization
- Split into small dog and large dog daycare
- Private play option for less social dogs

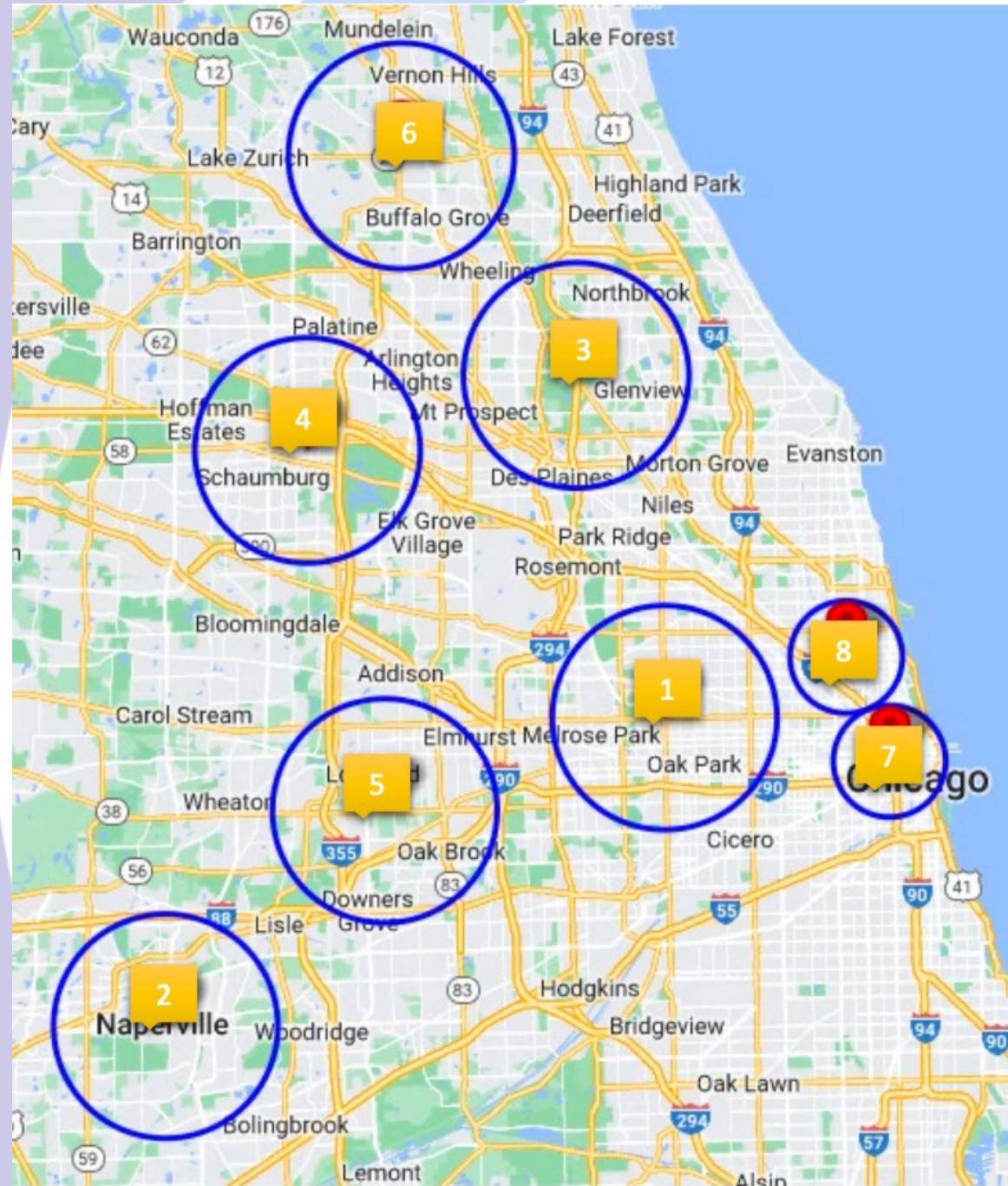




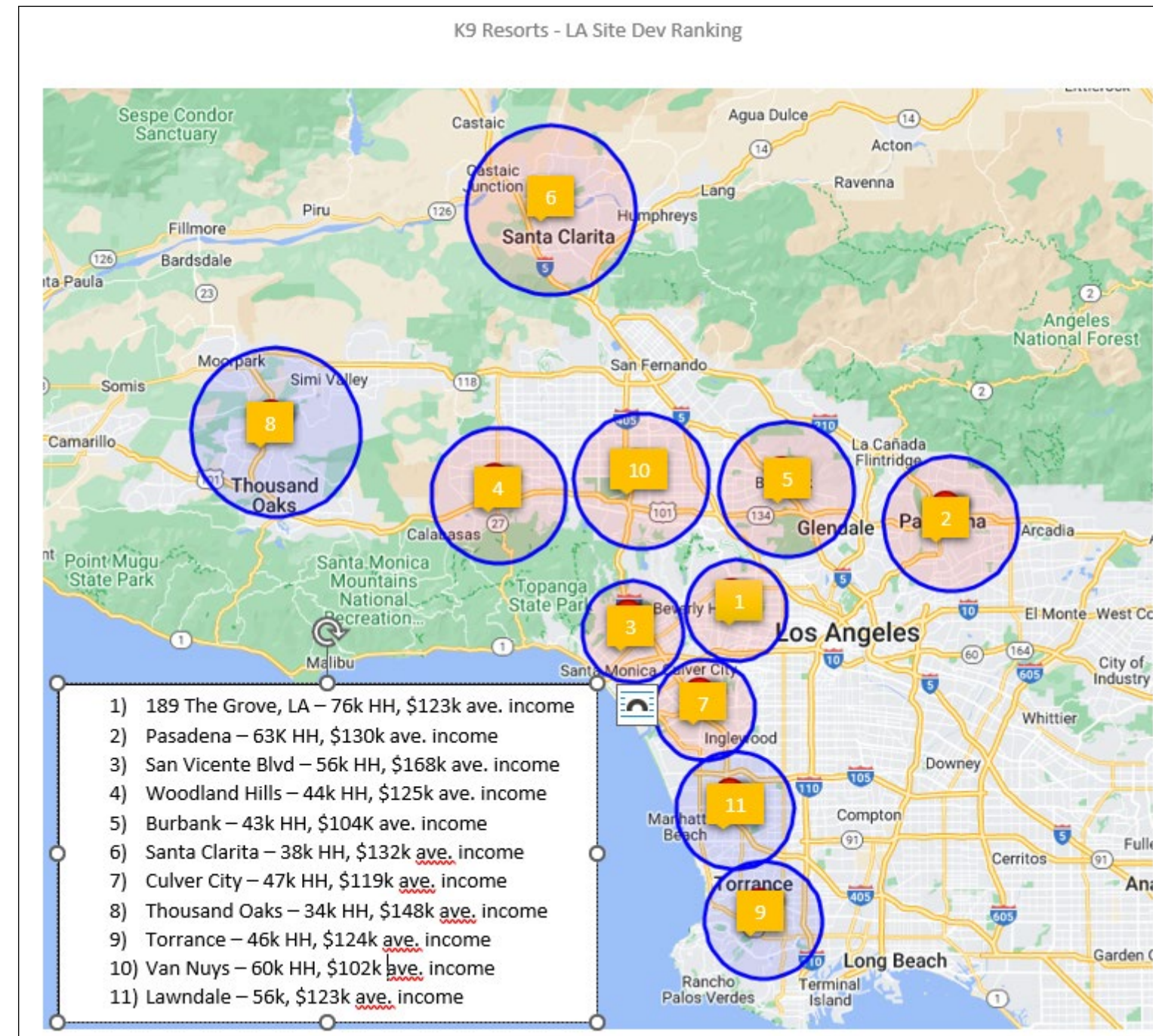
Who is Luxury Pet Hotel Investments?



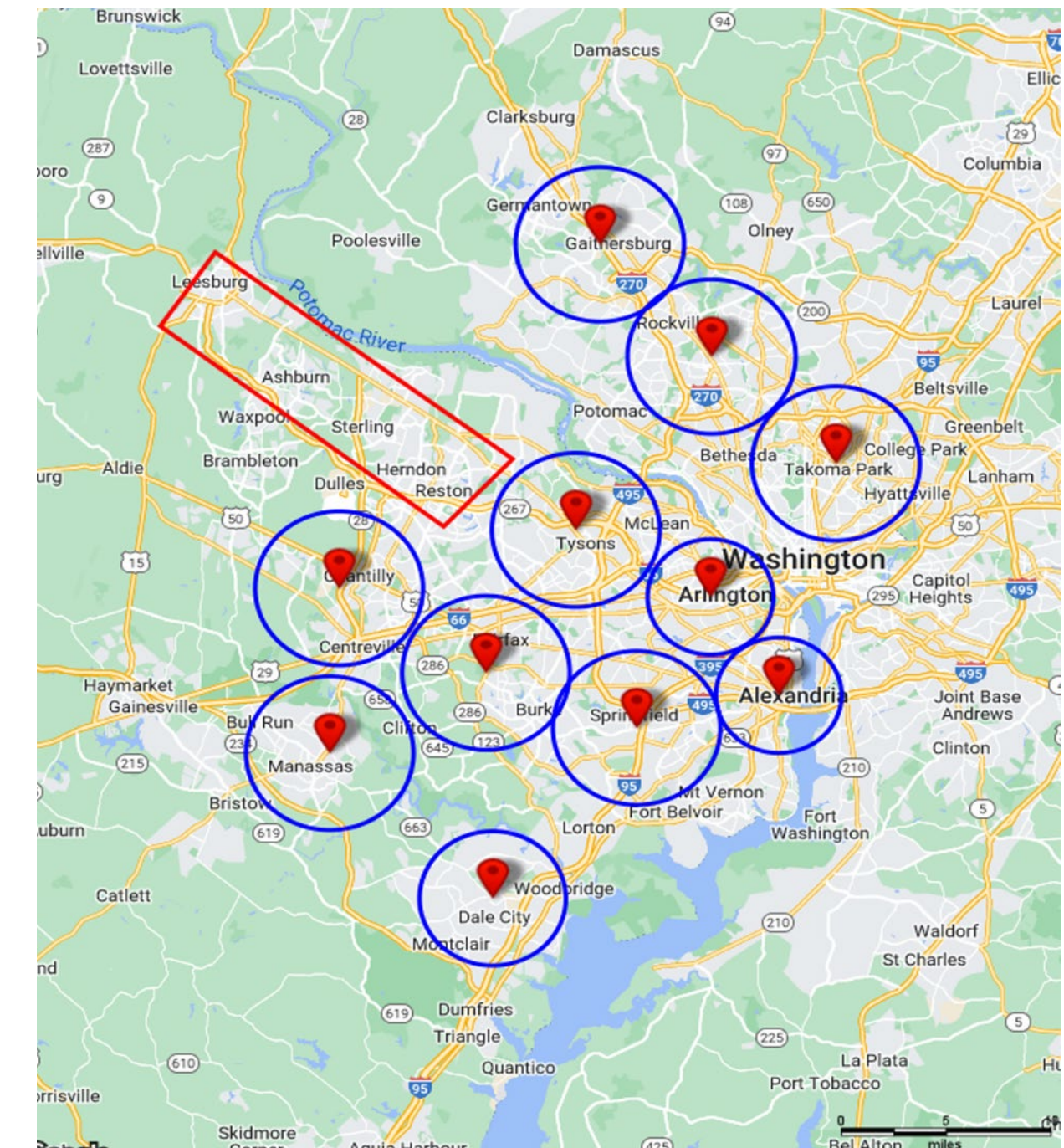
Largest K9 Resorts franchisee



8 in Chicago Region



11 in LA Region



11 in DC Region

30 Resorts... Soon to be more!



Board members of the franchisor



Franchise Times
The News and Information Source for Franchising

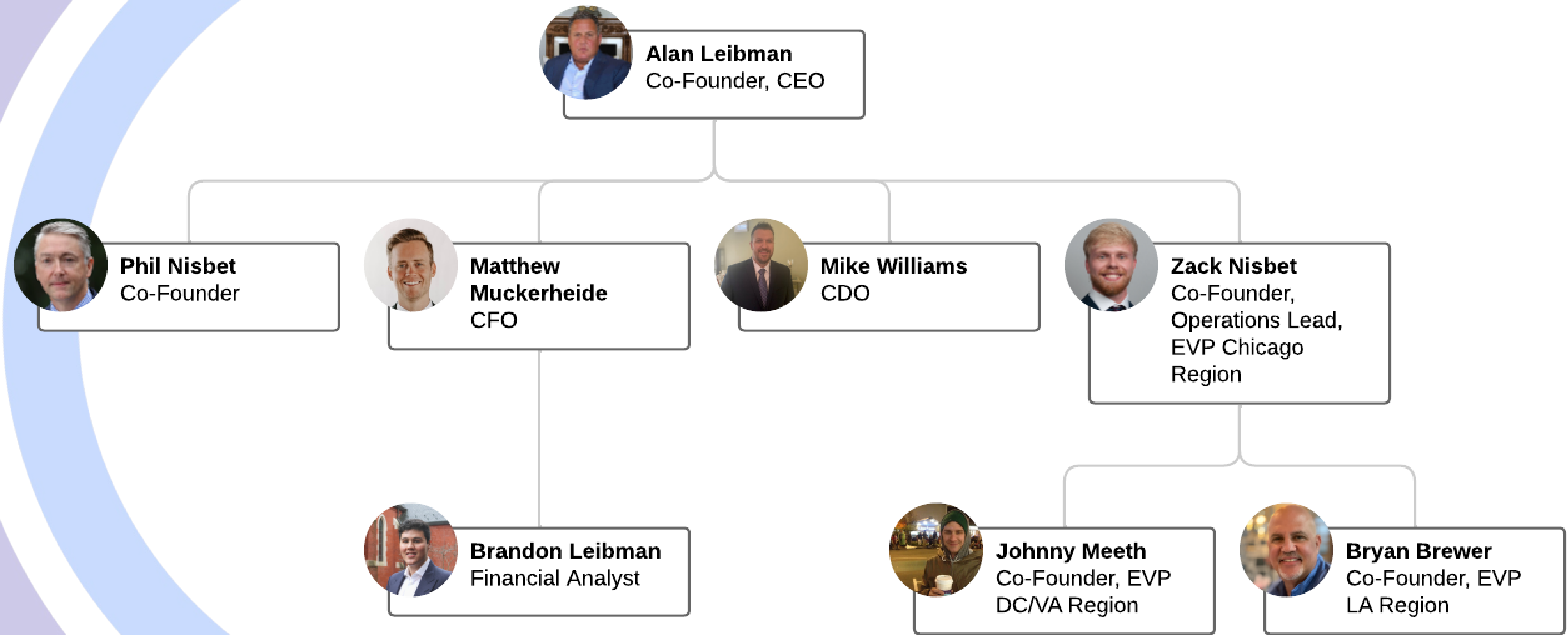
[Home](#) [Newsletter](#) [Magazine](#) [News](#) [Top 400 Franchises](#) [Resources](#)

K9 Franchisee Group Invests \$10 Million in Brand to Assist Expansion

Matthew Liedke Apr 8, 2024 Updated Apr 8, 2024



Leadership





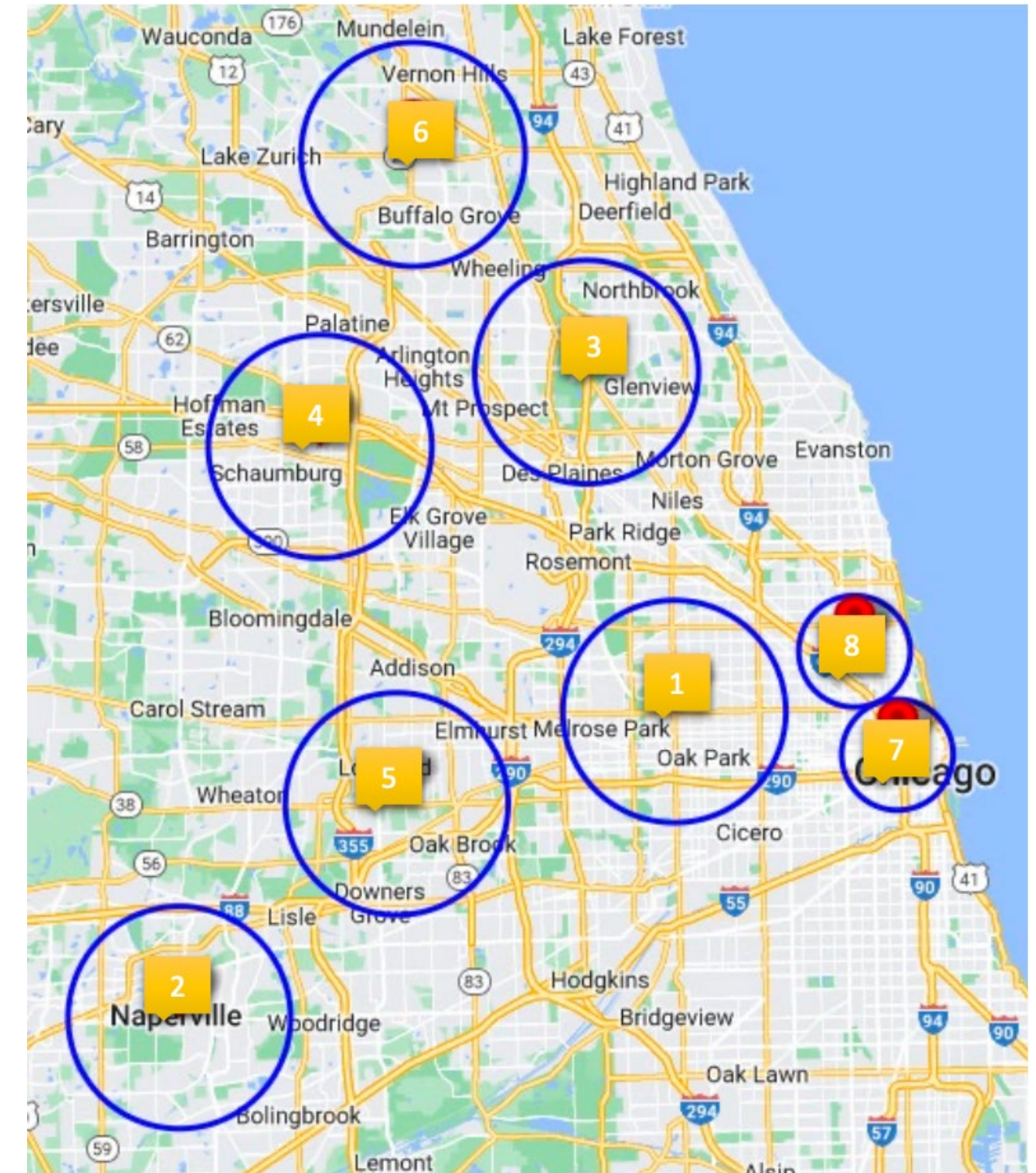
What are we looking for?



Site Selection Criteria



- 7,000 – 12,000 square feet
- 12' ceiling heights
- 2,500 contiguous outdoor area for doggie daycare
- 5mi residential population > 200,000
- 5mi average HH income > \$100,000
- 30k households or more with \$100k average HH income within 5 miles





#ICSC • ICSC.com